



# FORESTRY NEWSLETTER

2014

---



---

## FORESTRY NEWS

2014 has seen Management trying to relieve the pressures of the current economic environment by selling off a few forests and surrendering its Carbon Credits in the Emissions Trading Scheme.

Moneymore Forest was sold to Dunedin City Forest. Eyre forest was sold to a local agricultural contractor/farmer. Craig marked out boundaries for them and handed over relevant information. Hillfort was recently subdivided and part of the forest that was not used for forestry work but was leased to the neighbour for sheep farming is in the closing stages of being sold to the leasee.

The Directors at a meeting held on the 21<sup>st</sup> of March 2014 resolved to follow the strategy presented by the CEO of deregistering the Company from the Emissions Trading Scheme (Forestry) – Post 1989. The company has decided to extinguish its liability as it stands now to minimise the risk that future policy changes may increase the costs to the company. Craigpine will continue to reassess its position in being part of the scheme if circumstances change in the future.

Management policies have been updated with silviculture systems being tweaked.

A monthly FSC meeting took place through most of the year and an action sheet has been followed throughout.

We have moved away from having legislation printed in a folder; all relevant legislation can be found at [www.legislation.govt.nz](http://www.legislation.govt.nz); local government policies are listed and we have asked the Southland District Council to confirm we have these correctly listed.

## Craigpine Harvest Results

Craigpine harvested the following tonnes from its own forests between April 2013 and April 2014:

21074.43 tonnes of radiata from Rugged Hills

3885.04 tonnes of Douglas Fir from Waitane

Total tonnage being 24959.47 tonnes

## Craigpine Silviculture

2014 has seen a steady flow of silviculture taking place. A total area of 90 Hectares were re planted in three forests utilizing primarily the corrections department.

The previous year's planting of 70 Hectares had a final survival rate of 90% significantly up from past years. These were spot sprayed last year and were blanked this year to ensure an even stocking over the entire stand.

Craigpine have adopted a December cut off for replanting the following year to reduce incidences of Hylastes as well as allowing weeds and regen trees to establish prior to a desiccant spray. All areas were root raked by friend Contracting prior to aerial pre spraying. The pre spray has been a first for Craigpine and the results have been extremely positive with all weeds such as gorse and bracken removed as well as regen trees desiccated.

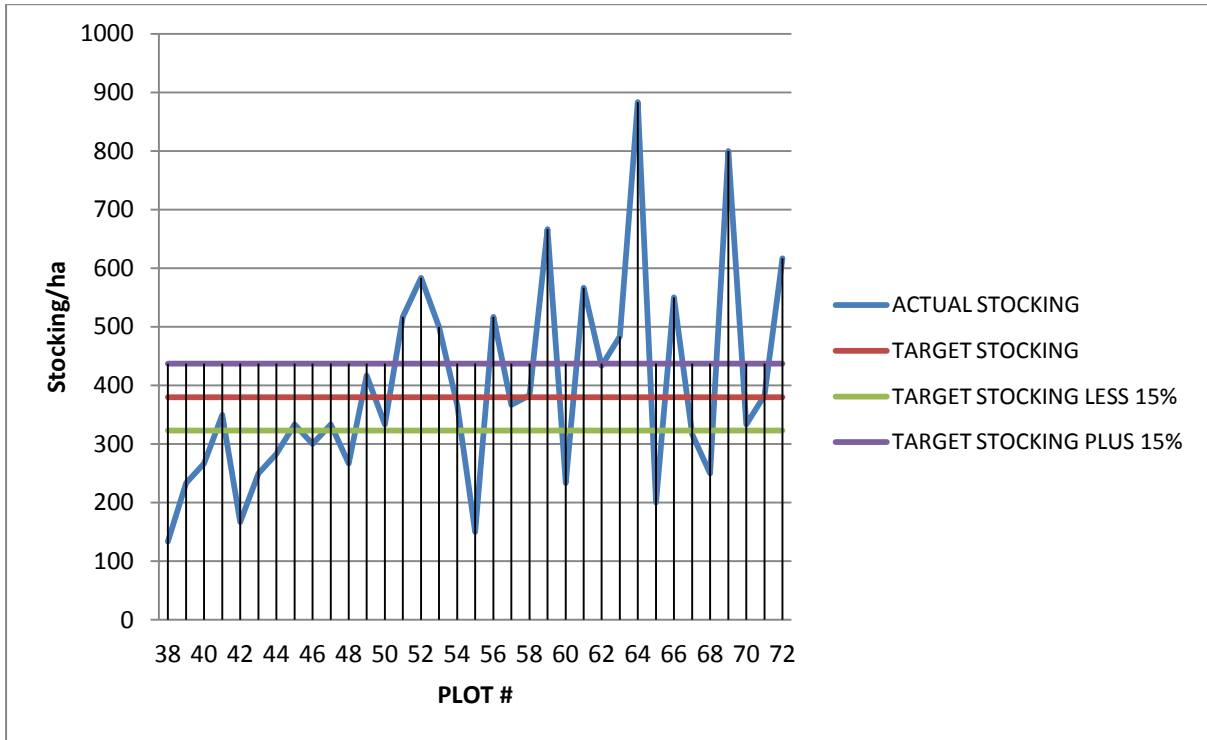
It had been identified from previous years plantings the lack of pre spray operations were creating significant issues with establishment.

The amount of regeneration trees had impacted on thinning costs, so it was chosen where possible in the younger stands (3-4 years old) to carry out a regen thinning operation rather than waiting to the standard thinning age. This will reduce the thinning costs in years to come. Forests having regen thinning carried out are as follows:

<b>FOREST</b>	<b>AREA</b>
MONAVAE	112
PINNACLE	71
RUGGED HILLS	196
<b>TOTAL</b>	<b>379</b>

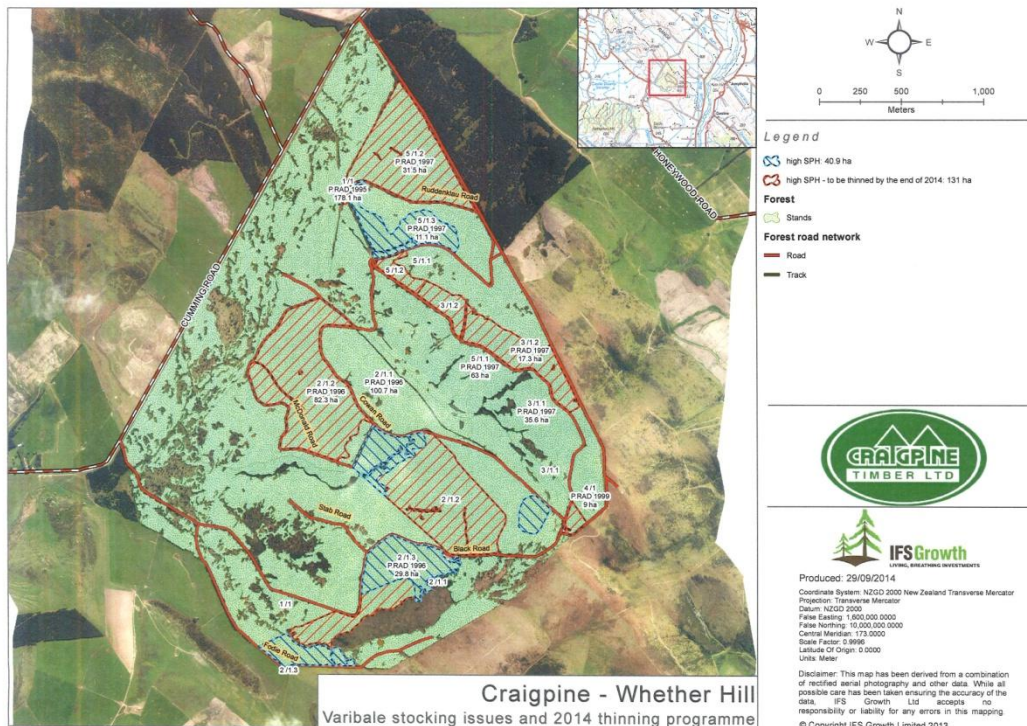
Whether Hill Thinning: It was identified there were large variations in stocking over the Whether Hills forest. See graph:

**WHETHER HILLS STOCKING/HA**



A total area of 180 Hectares was identified as highly stocked (exceeding 550 stems/hectare). A significant thinning programme has been put in place to rectify these issues.

See map:



**CORRECTIONS:**

Craigpine Timber has once again worked closely with the Corrections Department who have planted, pruned and thinned for us.

The quality of work carried out generally is excellent and any quality control audits are always met with eager anticipation to know all work is to standard.

See below for training records of current corrections crew for October:

Offender Employment - Dept. of Corrections Invercargill Prison																
prisoner #	17769 General Requirements	22994 Factors that Affect Performance	6916 DKO Approved Code Chainsaw use	6951 DKO Tree Selection	6952 Select Plantation Trees for a Forest Crop	23000 Forestry Foundation Skills	1232 DKO Planting Site Prep	1234 Plant Plantation Trees	22998 DKO Pruning Plantation Trees	1243 Prune Plantation Trees From the Ground	1245 Prune Plantation Trees from Off the Ground	6950 DKO Thinning Equipment	1247 Thin Plantation Trees	23411 Operate Chainsaw and carry out basic Maintenance	3285 Personal Protection at a vegetation fire	First Aid
9.1	1	1	1	1	1		1	1	1	1	1	1		1		
4	1	1	1	1	1		1	1	1	1	1	1		1		
6	1	1	1	1	1		1	1	1	1	1	1		1		
3	1	1	1	1	1		1	1	1	1	1	1		1		
1																
2	1	1														

The ability to gain these unit standards would not be possible without the work provided by Craigpine.

Whilst not all prisoners will seek employment within Forestry once released, the unit standards provide positive safety training and skills that may be used in other endeavours.

Studies have shown that re-offending is reduced if fulltime employment is found.

**Pest control**

All forests have now had possum trapping completed. 1080 has been dropped over Waitane and Hokonui – by the animal health board. There are mixed feelings about this within the office with much heated debate occurring.

## Environmental Monitoring

Craig has used the freshwater monitor kit from NIWA. Past results where these streams have been sampled yearly showed positive results - scores rated by NIWA (National Institute of Water and Atmosphere) as good to very good stream health. We monitor our streams bi-annually.

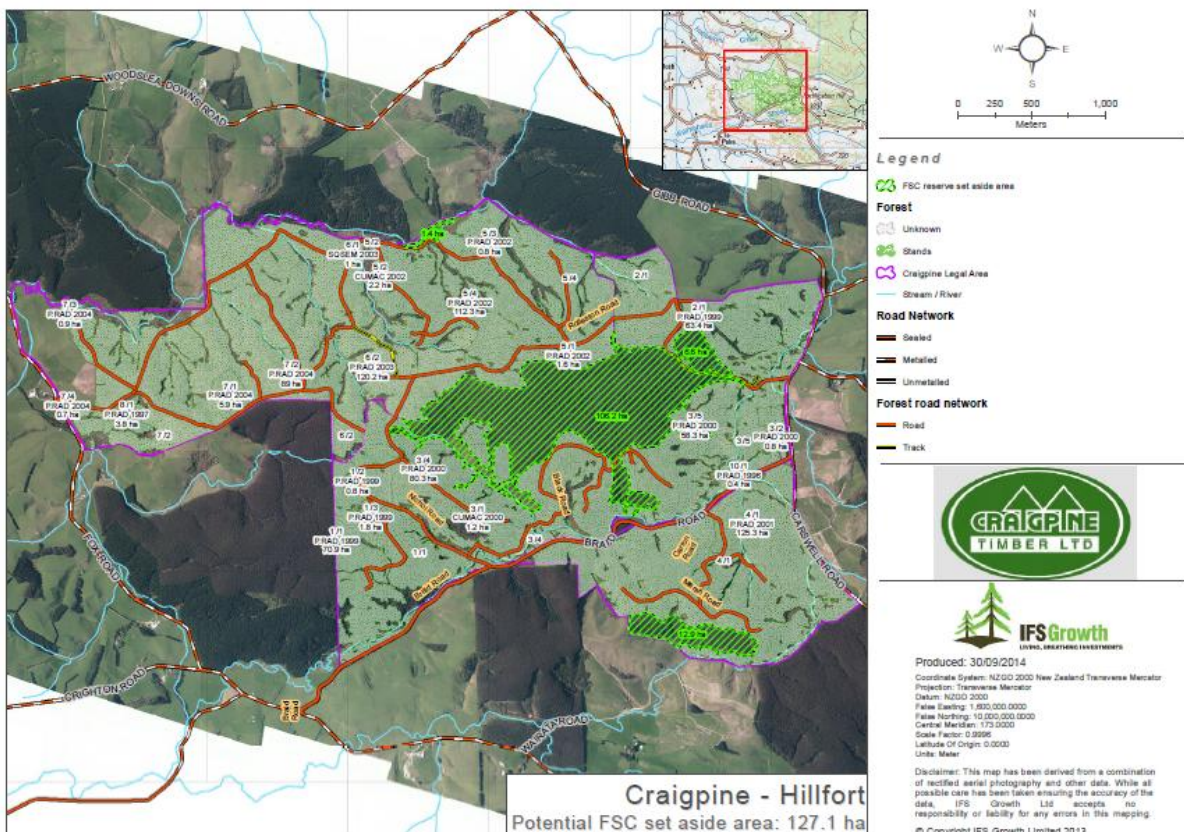
The two native monitoring sites based at the Hillfort forest have been revisited in 2014 showing similar results in the past.

Consultation with stakeholders regarding any High conservation value forest areas within Craigpine's forest have been carried out with no areas of significance cited. The wetland area within the rural women's forestry scheme of which Craigpine manages and fits within Craigpine's FSC certification has been identified with HCVF values. A group of stakeholders have been established including Craig assisting in the long term restoration of the wetland area. Removal of pest weeds, planting of indigenous plants, off road parking and creation of a walking track through the area are tasks identified to be carried out in the long term.

## Set aside areas:

Craig has been working through the new set of criteria to meet the standards prior to September 2015. The ecological districts have been identified that the Craigpine forests are situated in and potential areas for set aside have been located. The 10% threshold should be met with ease including the 5% requirement of forest area being maintained in native vegetation.

See example of Hillfort Forest:



## Forest Visit

It is our intention to take our stakeholders on a visit of some of our forest and logging sites in early 2015. Dates will be finalised in the New Year. Please advise the forestry team on (03) 236 7533 if you wish to attend.

---

For further information on FSC, visit their homepage at – [www.fscoax.org](http://www.fscoax.org)

CRAIGPINE FORESTRY CONTACTS: Brett, Craig, Billy, or Russell 03 236 7533

---